

---

## Where can I install HARO Floors ?

HARO flooring products are suitable for almost any residential and many commercial areas mainly as floating floors.

However, wet areas such as bathrooms are not recommended and cannot be covered under warranty.

### A glue-down installation

- May be necessary or desired depending on the circumstances (e.g. with that heavy kitchen island mentioned above)
- In commercial areas it may even be indispensable (see details in “Glue-down installation”).

### A floating installation

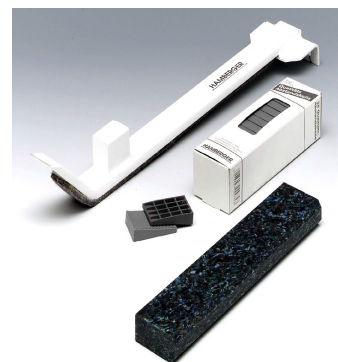
- Needs a suitable underlay beneath it e.g. CloudWalk™
- No heavy loads such as kitchen benches or islands may sit on a floating floor as they obstruct the floor’s movements.
- Along the perimeter of the installed flooring, a 10-15 mm gap has to be left for expansion/contraction of the flooring surface as a whole. Adjustable spacers can be used during installation to ensure the gap being sufficient.
- Along the walls, skirting boards will hold the flooring in place and cover the expansion gap.
- Where skirting boards cannot be used, such as along French doors or floor-to-ceiling windows mouldings have to be used to ensure that the floor can expand and contract sideways but it inhibited from rising up (also covering the necessary expansion)
- Where the timber floor joins up with a lower surface material such as vinyl or tiles, a reducer moulding can be used to eliminate a trip-edge.
- Each room needs to be separated by mouldings (usually in the doorways), so-called transition mouldings
- The maximum size of a continuously installed flooring area (no movement joints) is 10 x 10 m within one room.
- Hallways/narrow rooms have to installed parallel to the longest wall.



## What do I have to do in preparation ?

- In alterations, old carpets and underlays have to be taken up, glued cork tiles or vinyls may be left provided the floor is level enough. If installing over an existing timber floor check to make sure floor is firm (not bouncy or squeaky) and no nails, splinters etc. are protruding from the surface. The HARO flooring boards have to run crosswise to the existing T&G boards.
- The levelness has to be checked and meet with standards. If not it can be levelled with self-levelling compound or flattened by diamond-grinding depending on whether there are large dips or high.

- In new houses check that the concrete slab is dry according to NZ Building Standards using proper test equipment (Calcium Carbide Tester or Hydrometer).
- With underfloor heating please refer to the special guidelines for Installation over Underfloor Heating and follow the procedures diligently.
- No skirting boards shall be mounted prior to installation, in kitchen areas all joinery such as bench and fridge sides have to be elevated to allow the floor (and underlay) to fit under snugly.
- Prep jobs such as grinding/levelling and the levelness and moisture checks are best left to the professional.
- Store all packs sealed, flat and at room temperature before installing.
- Make sure you have all the specific installation tools: Pull Bar, Hammer, Distance Clamps or Spacers, Tapping Block, Undercutting Saw (for door jambs), Table Saw or Skill Saw, Jig Saw and the usual hand tools.



- On concrete slabs, you will also need a vapour barrier e.g. 0.2mm PE or PVC-film.



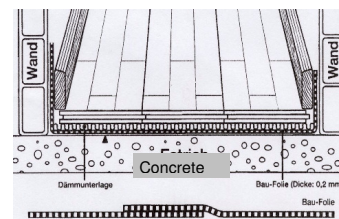
- Mouldings may be necessary depending on the situation (see “Floating Installation”).

## How do I do the installation ?

Although a professional timber floor installer would ensure that you get your HARO Hardwood floor just right you can have a go yourself following the 5 Steps to Successful Installation:

### Step #1

Lay the vapour barrier down overlapping the edges by 200-300mm then tape the joints, make sure the vapour barrier extends up the walls to just under the top of the skirting (it is best left in place till skirtings are attached and then cut at top end)



### Step #2

Lay the Cloud Walk underlay row by row as you install the floor butting each edge of the underlay together (no overlapping as this would create unevenness). At the end of each row leave a 5-10mm expansion just like you would with the flooring.

### Step #3

Before installing check each individual board for any defects: don't install any board with a defect. Wrap them adequately and inform your local dealer.

### Step #4

Start installing the Haro Flooring in the right hand corner of the room with the tongue-side facing the wall. On the back of every board an arrow and the printed words "Wand/Wall" point to the side that is to face the wall. Place the first board using the distance spacers or clamps about 10-15mm from both walls.



Take the second board and lay next to the first board's left head joint. Use an off-cut piece (about 150-200 mm long) and angle into the long sides of both boards to overlap the joint and make sure they are properly aligned.



With tapping block and hammer then tap the head (short-end) joint together (as it is Click Connect). Continue until you have come to the last board of this row. The last board will need to be cut to length and fitted with the pull-bar.



### Step #5

You can use the cut-off piece of the 1<sup>st</sup> row to start your second row. Please make sure that your minimum staggering distance of the head-joints in the first and second and all following rows is 500 mm or more. Angle the long side in (don't forget the gap on the right-



hand wall) and press downwards. Lightly tap with tapping block if required. Continue with the next board; leave a few mm between the head-joints. With the off-cut secure the head-joint and then tap together as in the first row.



Keep on like that to finish your rooms.

### A few tricks

Are mentioned below and are also shown in the HARO Installation DVD.

### Trick #1

If your staggering distance does not work out in the 2<sup>nd</sup> row, use a half board instead of the cut-off piece of the 1<sup>st</sup> row. Start the 3<sup>rd</sup> row with the left over board from the 1<sup>st</sup> row and the 4<sup>th</sup> row with the leftover board from 2<sup>nd</sup> row. You are thus alternating the rows and the staggering distance should be correct.

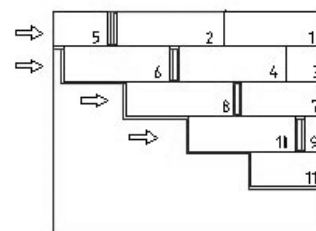
### Trick #2

To avoid a last row with very narrow boards, calculate the number of rows in your room and the left over width. If it is less the half a board's, start with the boards in your 1<sup>st</sup> row cut to half their width. The last row will then not become a finger-gamble ! (And ACC will love you for it...)

### Trick #3

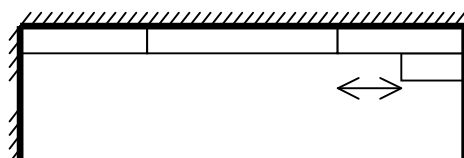
TRITTY Laminate boards can be installed in a so-called stepped technique. It is especially convenient when installing a very long room as it saves on running back and forth to complete each row.

Prepare starter boards for the first 4 rows. Put board 1 and 2 down then angle in 3, 4, 7 and 9. (4 will now automatically act as guide for the head joints of boards 1 and 2). Tap head joints in rows 1 and 2 together. Put down 5 and angle in 6, 8, 10 and 11 and join rows 1 to 4. Continue until those 4 rows are completed. With the off-cuts you can start the next set of 4 rows and so forth.



Note:

Make sure your Minimum Staggering Distance is correct.



**Minimum Staggering  
Distance 500 mm**

## Glue-down installation

All HARO Flooring products can be fully glued down. A glue-down installation will be necessary

- In commercial applications with a lot of foot traffic.
- In any case when heavy loads will be sitting on the floor (e.g. polished concrete kitchen islands, large display stands in shops, a king-size waterbed).
- If the customer wishes it.

### Advantages of glue-down installation

The maximum installation area is not restricted as in the floating installation and mainly depends on the type of sub-floor (if that changes a dilatation gap has to be provided).

Any installation direction is possible, e.g. across in hallways.

---

Walking on a glue-down floor feels solid-as and no drum-noise effects or slight “springiness” will be felt.

No mouldings need to be used apart from where the flooring meets other surfaces such as carpet etc. and these can be a lot less visible (e.g. by using a tile bar).

However, a glue-down installation should be left to the experienced, professional installer as a lot more can go wrong !

### **Suitable sub-floors**

Concrete: level within standards, moisture tested and satisfactory or sealed with an appropriate sealer. If levelled, the whole surface has to be covered with levelling compound at a minimum thickness of 3 mm (no patching as is possible in a floating installation).

Plywood, particleboard: level within standards

Old timber floor (e.g. T&G on joists): firmly fixed, overlaid (glued-down) with balancing material (e.g. 4mm MDF-boards “Thinline”), level within standards

### **Glue**

It has to be specified for pre-finished flooring. Water-based glues are not suitable. If the concrete is moisture-sealed, the glue has to correspond with the sealer (best use recommended products from one manufacturer).

Depending on the glue-manufacturer’s specifications, glues can be trowelled or gunned.

The actual installation procedure is the same as in a floating installation (pages 10-11). The sub-floor has to have a certain minimum surface temperature (15 °C or as specified by the glue-manufacturer). When trowelling the glue make sure you only cover as much area as you will be able to lay in 15 –30 min as the glue will start to tack and thus not bond properly any more.

Make sure any glue residues on the flooring surface are wiped off immediately. You can use Methylated Spirits on any HARO Flooring finish without harm, although it should not be left standing in puddles.

The installed area has to be weighted till the glue has gone off, best overnight. You can use packs in the beginning; towards the end either suitable weights such as packs of tiles, full paint buckets can be usually found on site. Otherwise be prepared and bring weights with you, e.g. used plastic 20 litre varnish canisters filled with sand or water (make sure these are dry and not leaking).

Avoid walking on the glued-down areas and let the glue dry for at least as long as set out in the glue-manufacturer’s instructions. The full load may be only applied several days later once the glue has completely settled, please refer again to the glue-manufacturer’s instructions.

Expansion joints in the flooring surface (e.g. from an area with under-floor heating to one without, changes in the sub-floor material) can be filled with matching elastic (acrylic) filler (make sure it is silicone-free).